

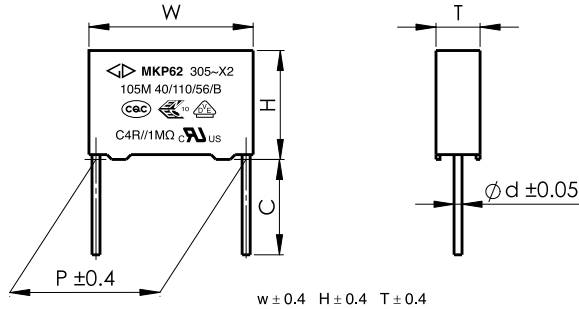


# MKP62+R

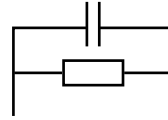
Code: C4R

## 金属化聚丙烯膜抗干扰电容器 (带放电电阻, X2类, 305Vac) Metallized polypropylene film Interference Suppression capacitor with discharge resistor (Class X2, 305Vac)

### 外形图 Outline Drawing



### 电路结构图 Electrical Connection



### 特点

- X2电容器与放电电阻内部并联组成
- 优异的阻燃性能
- 用于电源跨线路等抗干扰场合

### Features

- Internal parallel connection from X2 cap to discharge resistor
- Excellent active and passive flame resistant abilities
- Used in across-the-line, interference suppression circuit

### 安全认证 Safety Approvals

|   |  |                    |   |
|---|--|--------------------|---|
| ● |  | CQC<br>(中国)        | IEC 60384-14:2013, X2, 305Vac, 0.22 μF~10.0 μF, 40/110/56/B, discharge resistor 470k Ω~20M Ω<br>证书号(Certificate No.): CQC03001002875                  |
| ● |  | ENEC-VDE<br>(欧盟)   | EN 60384-14:2013+A1:2016, X2, 305Vac, 0.22 μF~10.0 μF, 40/110/56/B, discharge resistor 470k Ω~20M Ω<br>证书号(Certificate No.): 40000358                 |
| ● |  | UL/CUL<br>(美国/加拿大) | UL 60384-14:2009, CSA E60384-14:09, X2, 305Vac, 0.22 μF~10.0 μF, 40/110/56/B, discharge resistor 470k Ω~20M Ω<br>证书号(File No.): E186600, CCN: FOWX2/8 |

### 技术要求 Specifications

|  |                                    |                                  |                                   |
|--|------------------------------------|----------------------------------|-----------------------------------|
| 气候类别 / 阻燃等级<br>Climatic Category/Passive Flammability Category | 40/110/56/B                        |                                  |                                   |
| 工作温度范围<br>Operating Temperature Range                          | -40 ~ +110                         |                                  |                                   |
| 额定电压 Rated Voltage (U <sub>R</sub> )                           | 305Vac, 50/60Hz                    |                                  |                                   |
| 电容量范围 Capacitance Range  | 0.22μF ~ 10.0μF                    |                                  |                                   |
| 电容量偏差 Capacitance Tolerance                                    | ± 10%(K), ± 20%(M)                 |                                  |                                   |
| 放电电阻范围 / 偏差 Resistance range/ Tolerance                        | 470k ~20M , ± 10%                  |                                  |                                   |
| 耐电压 Voltage Proof  | 引线之间<br>Between Terminals:         | 4.3U <sub>R</sub> (dc), 2s       |                                   |
|  | 极壳之间<br>Between Terminals To Case: | 2 120Vacc, 1min                  |                                   |
| 损耗角正切 Dissipation Factor (tan δ)                               | 0.22μF < C <sub>N</sub> 0.47μF     | 20 x 10 <sup>-4</sup> (1kHz,20 ) | 20 x 10 <sup>-4</sup> (10kHz,20 ) |
|  | 0.47μF < C <sub>N</sub> 1.0μF      | 20 x 10 <sup>-4</sup> (1kHz,20 ) | 40 x 10 <sup>-4</sup> (10kHz,20 ) |
|  | 1.0μF < C <sub>N</sub> 10μF        | 30 x 10 <sup>-4</sup> (1kHz,20 ) | -----                             |

产品编码说明 Part number system

■ 18位产品代码如下:

The 18 digits part number is formed as follow:

|   |   |   |   |   |   |   |   |   |    |    |    |    |    |    |    |    |    |
|---|---|---|---|---|---|---|---|---|----|----|----|----|----|----|----|----|----|
| 1 | 2 | 3 | 4 | 5 | 6 | 7 | 8 | 9 | 10 | 11 | 12 | 13 | 14 | 15 | 16 | 17 | 18 |
| C | 4 | R |   |   |   |   |   |   |    |    |    |    |    |    |    |    |    |

|         |  |                |   |
|---------|--|----------------|---|
| 第1~3位   | 型号代码                                   | Digit 1 to 3   | Series code                                     |
|         | C4R=MKP62 带放电电阻                        |                | C4R=MKP62 Series with discharge resistor        |
| 第4~5位   | 交流额定电压                                 | Digit 4 to 5   | AC rated voltage                                |
|         | Q2=305V                                |                | Q2=305V   |
| 第6~8位   | 标称容量                                   | Digit 6 to 8   | Rated capacitance value                         |
|         | 举例: 103=10 × 10 <sup>3</sup> pF=0.01μF |                | For example: 103=10 × 10 <sup>3</sup> pF=0.01μF |
| 第9位     | 容量偏差                                   | Digit 9        | Capacitance tolerance                           |
|         | K= ± 10%, M= ± 20%                     |                | K= ± 10%, M= ± 20%                              |
| 第10位    | 引线脚距P                                  | Digit 10       | Pitch   |
|         | 9=22.5mm B=27.5mm F=37.5mm             |                | 9=22.5mm B=27.5mm F=37.5mm                      |
| 第11位    | 放电电阻阻值代码                               | Digit 11       | Value code of the discharge resistor            |
| 第12~15位 | 引线加工和包装代码                              | Digit 12 to 15 | Lead form and packaging code                    |
| 第16~18位 | 内部特征码                                  | Digit 16 to 18 | Internal use                                    |

■ Table 1 引线加工和包装代码 lead form and packaging code

| 第 12 位 Digit 12 |  | 第 13 位和第 14 位 Digit 13 and Digit 14 |  | 第 15 位 Digit 15  |  |
|-----------------|--|-------------------------------------|--|------------------|--|
| 代码 Code         | 说明 explanation   | 代码 Code                             | 说明 explanation   | 代码 Code          | 说明 explanation   |
| C               | 直脚<br>straight lead "C"<br>in the figure above                               | 00<br>45                            | 标准的引线长度 (18mm~26mm)<br>standard lead length<br>引线长度 4.5mm<br>lead length 4.5mm   | 0                | 引线长度偏差 ± 0.5mm 或标准长度<br>Length tolerance ± 0.5mm<br>Or standard length   |
| D               | 软绝缘线 (多股)<br>Insulated stranded leads  | C5<br>K0<br>K2<br>L0                | 35mm<br>100mm<br>120mm<br>200mm<br>注 1: 这里的长度包含剥线长度<br>Note 1: This length includes the stripping parts.<br>注 2: 一般 P ≥ 27.5 产品才可选用绝缘线方式<br>Note 2: Normally, for P ≥ 27.5 Caps can choice<br>Insulated leads. | 1<br>2<br>3<br>4 | 引线长度偏差 -5mm ~ 0mm<br>Length tolerance -5 mm ~ 0 mm<br>引线长度偏差 0 mm ~ +5 mm<br>Length tolerance 0 mm ~ +5 mm<br>引线长度偏差 0 mm ~ +10mm<br>Length tolerance 0 mm ~ +10mm<br>引线长度偏差 ± 5 mm<br>Length tolerance ± 5 mm |
| E               | 硬绝缘线 (单股)<br>Insulated solid leads   |                                     |  |                  |  |
| M               | 软绝缘线 (多股),<br>外壳带正底安装耳<br>Insulated stranded leads<br>Box with mounting foot |                                     |  |                  |  |



# MKP62+R

Code: C4R

## ■ 外形尺寸表 Dimensions ( mm )

| 305Vac                 |      |      |      |      |     |                    |
|------------------------|------|------|------|------|-----|--------------------|
| C <sub>N</sub><br>(μF) | W    | H    | T    | P    | d   | Part number        |
| 0.22                   | 26.5 | 16.0 | 7.0  | 22.5 | 0.8 | C4RQ2224-9#****+++ |
| 0.33                   | 26.5 | 17.0 | 8.5  | 22.5 | 0.8 | C4RQ2334-9#****+++ |
| 0.47                   | 26.5 | 18.5 | 10.0 | 22.5 | 0.8 | C4RQ2474-9#****+++ |
| 0.68                   | 26.5 | 20.0 | 11.0 | 22.5 | 0.8 | C4RQ2684-9#****+++ |
| 1.0                    | 26.5 | 22.0 | 12.0 | 22.5 | 0.8 | C4RQ2105-9#****+++ |
| 0.47                   | 32.0 | 18.0 | 9.0  | 27.5 | 0.8 | C4RQ2474-B#****+++ |
| 0.68                   | 32.0 | 20.0 | 11.0 | 27.5 | 0.8 | C4RQ2684-B#****+++ |
| 1.0M                   | 32.0 | 20.0 | 11.0 | 27.5 | 0.8 | C4RQ2105MB#****+++ |
| 1.0K                   | 32.0 | 22.0 | 13.0 | 27.5 | 0.8 | C4RQ2105KB#****+++ |
| 1.5                    | 32.0 | 22.0 | 13.0 | 27.5 | 0.8 | C4RQ2155-B#****+++ |
| 2.2                    | 32.0 | 28.0 | 14.0 | 27.5 | 0.8 | C4RQ2225-B#****+++ |
| 3.3                    | 32.0 | 33.0 | 18.0 | 27.5 | 0.8 | C4RQ2335-B#****+++ |
| 4.7                    | 32.0 | 37.0 | 22.0 | 27.5 | 0.8 | C4RQ2475-B#****+++ |
| 1.5                    | 41.0 | 22.0 | 11.0 | 37.5 | 1.0 | C4RQ2155-F#****+++ |
| 2.2                    | 41.0 | 24.0 | 13.0 | 37.5 | 1.0 | C4RQ2225-F#****+++ |
| 3.3                    | 42.0 | 28.0 | 14.0 | 37.5 | 1.0 | C4RQ2335-F#****+++ |
| 4.7                    | 41.0 | 32.0 | 17.0 | 37.5 | 1.0 | C4RQ2475-F#****+++ |
| 6.8                    | 42.0 | 40.0 | 20.0 | 37.5 | 1.0 | C4RQ2685-F#****+++ |
| 10.0                   | 41.0 | 41.0 | 26.0 | 37.5 | 1.0 | C4RQ2106-F#****+++ |

- 注：1. “-”表示容量偏差。 “-” =capacitance tolerance code, M=±20%,K=±10%  
 2. “\*\*\*\*”表示引线加工和包装代码（见table 1）。“\*\*\*\*” =lead form and packing code ( refer to table 1 )  
 3. “#”对应的电阻值表。 Digit 11: “#” =Value code of the discharge resistor (tolerance ±10%)

| 电阻值<br>R <sub>N</sub> | 470kΩ | 680kΩ | 820kΩ | 1MΩ | 1.2MΩ | 1.5MΩ | 2.2MΩ | 3.3MΩ | 4.7MΩ | 6.8MΩ | 10MΩ | 20MΩ |
|-----------------------|-------|-------|-------|-----|-------|-------|-------|-------|-------|-------|------|------|
| 代码<br>Code            | A     | B     | C     | D   | E     | F     | H     | L     | N     | P     | S    | T    |