

# SAW Resonator 868.35 MHz

MODEL NO.: TC0144A

REV. NO.:2

## A. FEATURES:

- 1-Port Resonator.

## B. MAXIMUM RATING:

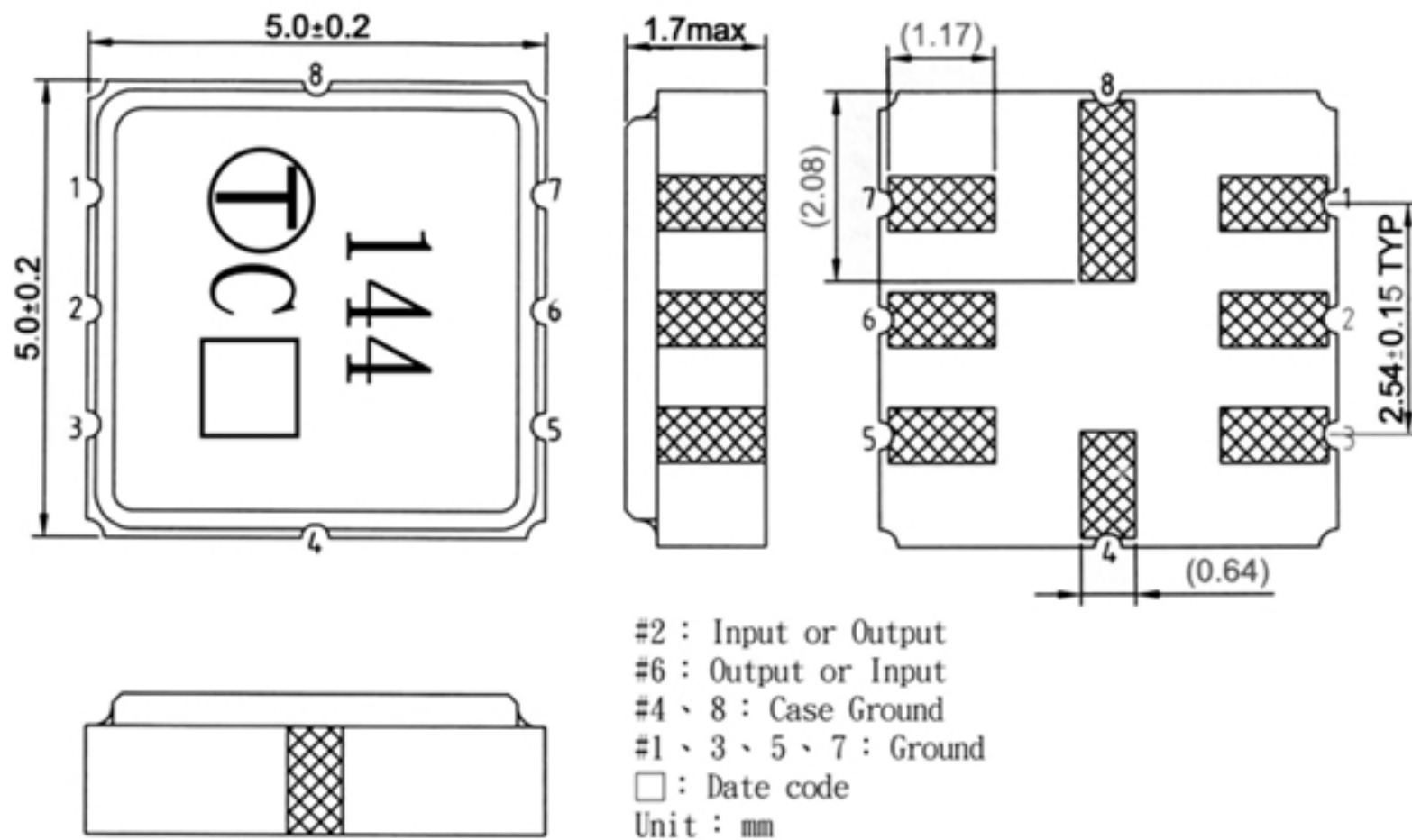
- 1.Input Power Level: 0 dBm
- 2.DC voltage: 12 V
- 3.Operating Temperature: -40°C to +85°C
- 4.Storage Temperature: -40°C to +85°C

RoHS Compliant  
Lead free  
Lead-free soldering

## C. ELECTRICAL CHARACTERISTICS:

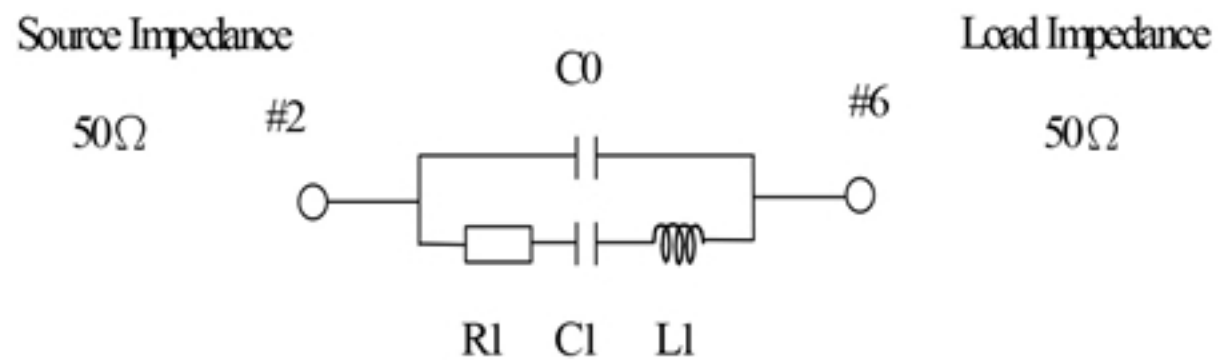
Characteristic	Units	Minimum	Typical	Maximum
Center frequency <b>Fr</b>	<b>MHz</b>	868.150	868.350	868.550
Insertion Loss <b>IL</b>	<b>dB</b>	-	1.3	2.5
Equivalent Elements				
Motional capacitance <b>C1</b>	<b>fF</b>	-	1.21	-
Motional inductance <b>L1</b>	<b>μH</b>	-	27.66	-
Motional resistance <b>R1</b>	<b>Ohm</b>	-	17.92	-
Parallel capacitance <b>Co</b>	<b>pF</b>	-	2.51	-
Temp.coeff.	<b>ppm/c*2</b>	-	0.032	-
Turnover To	<b>deg.C</b>	20	-	50
Package size		SMD 5X5X1.4mm		

## D. OUTLINE DRAWING:



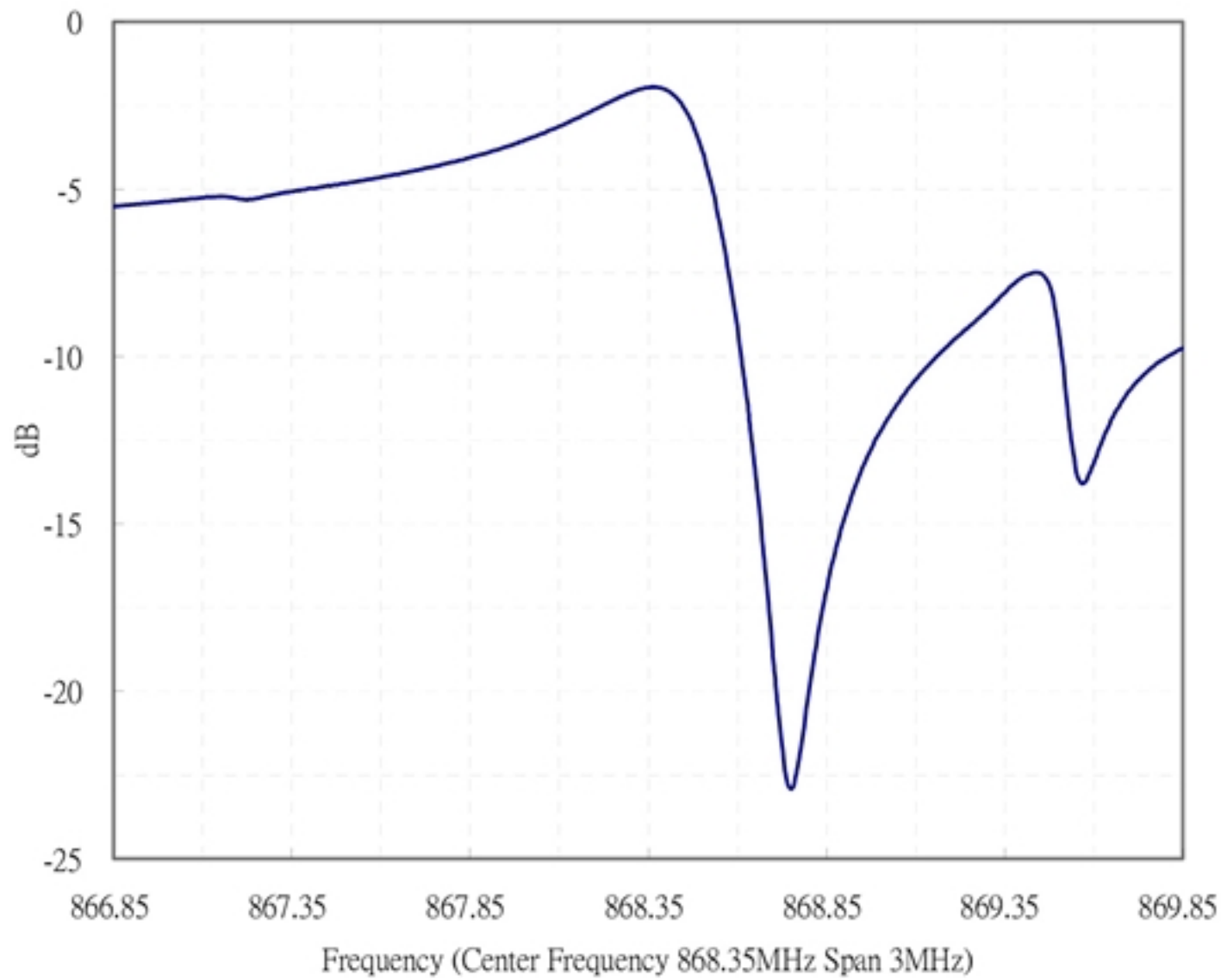
### E. EQUIVALENT CIRCUIT:

One-Port Resonator:



### F. FREQUENCY CHARACTERISTICS:

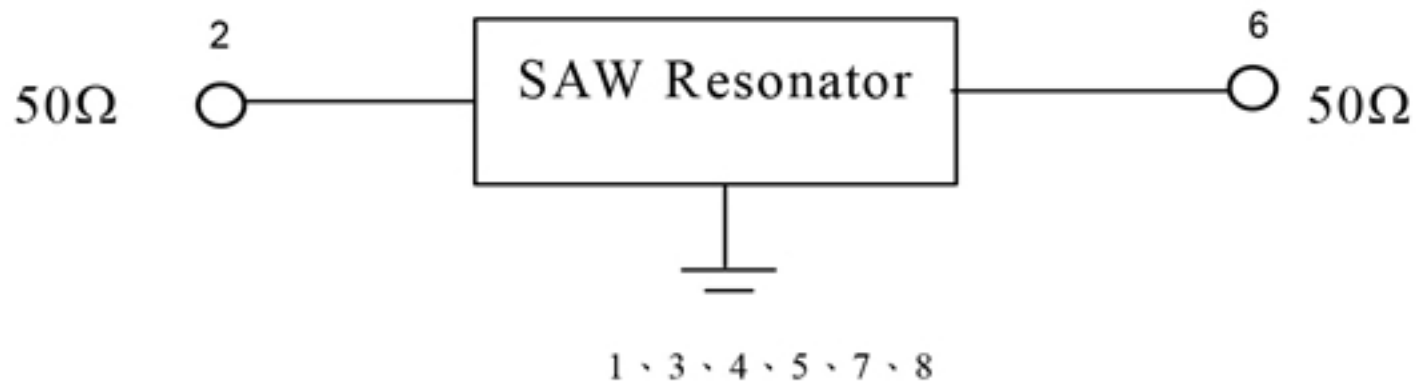
Resonator 868.35MHz Frequency Characteristics (S21)



**G. TEST CIRCUIT:**

Network analyzer

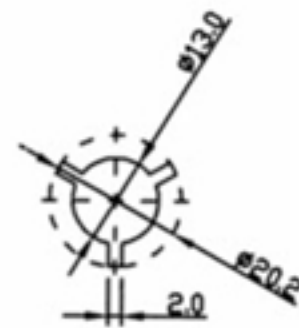
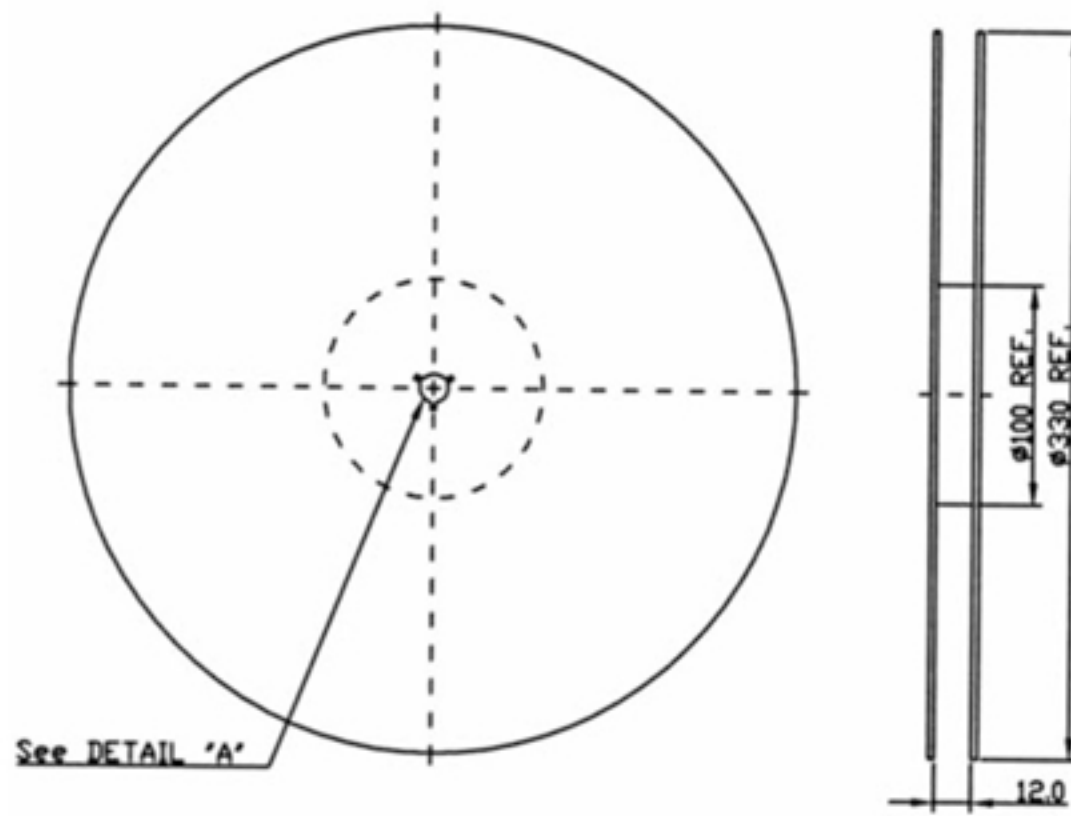
From 50 Ω  
Network  
Analyzer



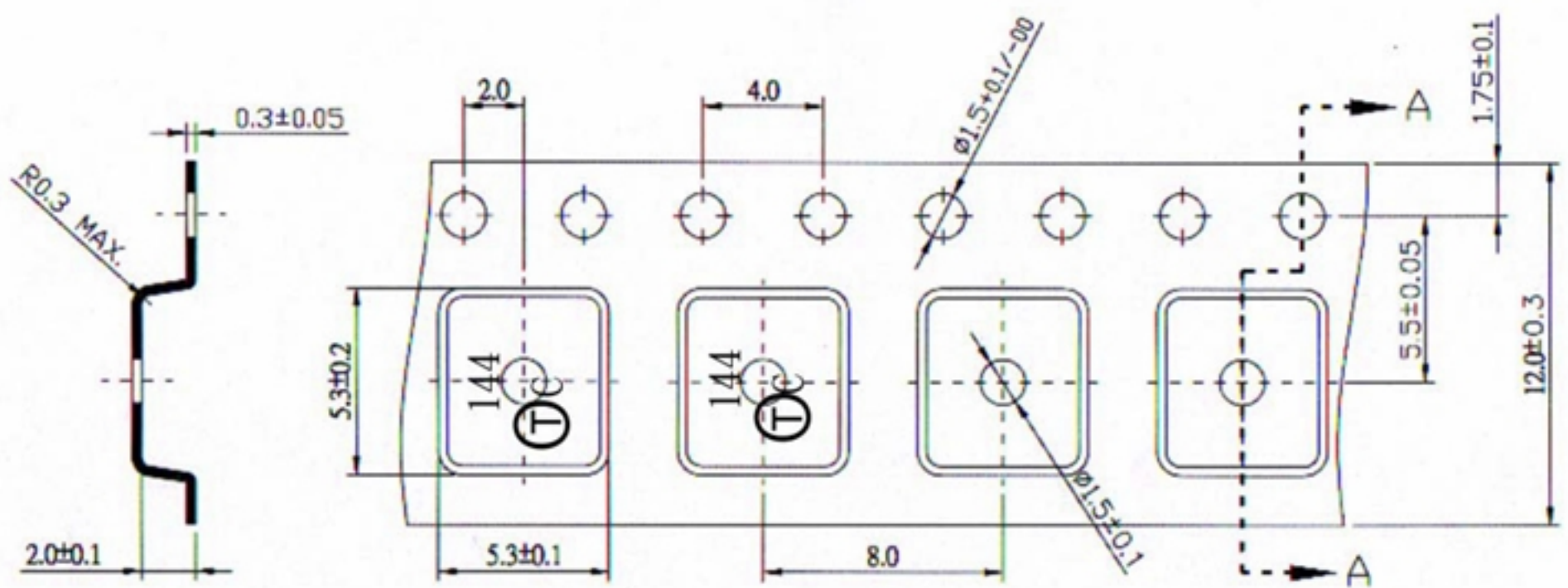
To 50 Ω  
Network  
Analyzer

**H. PACKING:**

1. REEL DIMENSION



## 2. TAPE DIMENSION



Section A-A